

BoxCenter Mark 6

The BoxCenter Mark 6 is radically different from other box making machines:

- Less than half the price of other machines.
- Makes over 500 box variations—too many to name.
- Makes pads with up to 10 vertical and /or horizontal creases.
- It takes 1/10 of the floor space of other machines, due to its vertical orientation.
- Takes 15 seconds to enter the data, no setup delay.
- It takes a few mouse clicks for popular boxes, specials take a few clicks more.
- It cuts and creases in any direction, as many times as needed.
- No mechanical adjustments, like fences, knobs, guides or head positions.
- No slitting machine is needed, it does not need pre-sized blanks.
- No air compressor or 3-phase wiring needed. Just plug in to standard wall plug.
- Uses Windows 7 PC with large color screen, WiFi, webcam, mic, speakers.
- Very simple control panel (two switches) the computer does the rest.
- Software controls direction, depth, speed and passes second by second.
- Service and support via video call, chat, email, or phone.
- Software upgrades are sent over the web as an email attachment.
- It weighs less than the shipping crate of other machines.
- Ships in two boxes, one 22 Lbs, the other 120 Lbs.



BOX EXAMPLE PHOTO :

RSC (Various versions - 1,3 & 4 Panels as well as no flaps with trays for top and bottom)

5PF (Flaps meet in the middle)

1PF (With 1 only side full overlap)

GRIDS (Various sizes)

The power switch has a pilot light to indicate when it is on. The machine makes almost no noise when idle. A circuit breaker is also part of the switch.

An emergency stop switch removes all power to the machine. Note the standard computer power cord. It takes less power than the computer that runs it. The machine communicates with the computer via a USB cable.



With the BoxCenter, you don't choose a box from a short list, you design the box you need by clicking the components.

For the common RSC style, you pick one of 6 kinds of flaps for the top and the same or different flaps for the bottom. You know about boxes with 4 panels, but the BoxCenter offers from 1 to 8 panels. Put together 4 1-panel parts to make very large boxes from modestly sized sheets (or scraps). Perhaps a 3 panel section makes the best use of a full sheet. Put it with a 1-panel piece to make the box you need. A 3-panel piece also makes a triangular box. A 6-panel (or 2 3-panel) section is good for boxing up reels, pipes and other round objects with less cardboard and take up less space.

This gives 210 combinations. By making boxes from 2 or more sections, you can have different flaps on each section. Example: Make a 3-panel section with very short flaps. Attach a 1-panel piece that has very long flaps to cover the top and bottom. This completes a box with very little overlapping cardboard, and that reduces cost.



C
O
N
T
R
O
L

P
A
N
E
L

Another workhorse of a box style is the five panel folder. It has less overlapping cardboard and can be easier to load than an RSC. Manufacturers of knocked down furniture use the 5PF a lot. The BoxCenter offers 126 variations of this style, too. You can choose from 6 flap types for both ends, and 6 different closures for the body of the box. Like for the RSC, some flap types are meant for closing by tape, glue, staples or strapping. There are 5 choices for the top of the box, and 5 for the side. Pick the one that works the best.

The tray or one panel folder body are always 1-panel, but all six flap variations are offered for each closure.

Not only does the BoxCenter make boxes but it produces shipping accessories as well. It makes plain pads, of course, but allows up to ten horizontal and/or vertical creases, as needed. The 2PF (corner/edge protectors) and Grids (dividers) as available as well.

So, the BoxCenter makes hundreds of unique box variations. To make even more combinations, you can make one box a bit bigger than another and slip them together, making a telescoping box. When the RSC, 5PF and 1PF are made with 3" flaps, they can be joined with splices and strapped together for very long or large assemblies. The variations for pads are almost unlimited.

those items that you need to complete a task. Both graphics and words are used to increase understanding. .

The INDEX shows tabs for all available screens and lights up for the one selected. Once chosen, you enter the size of the box needed (LxWxD). Click on the button for single or double wall material based on sheet being used. The "ON SHEET" light lets you find sheet corners and edges. The green slider lets you set the speed high for long moves or slow for precise positioning, as you choose.

There are 6 flap types available which allow you to pick different flap styles for each closure. The number of panels or body of the box options work the same way. You are presented with a graphic representation of your selection for review.

The SHOW button runs and calculates the blank size needed, summary of the box data selected and the displays the layout version of the box. The START button lets you initialize and start the box making process.

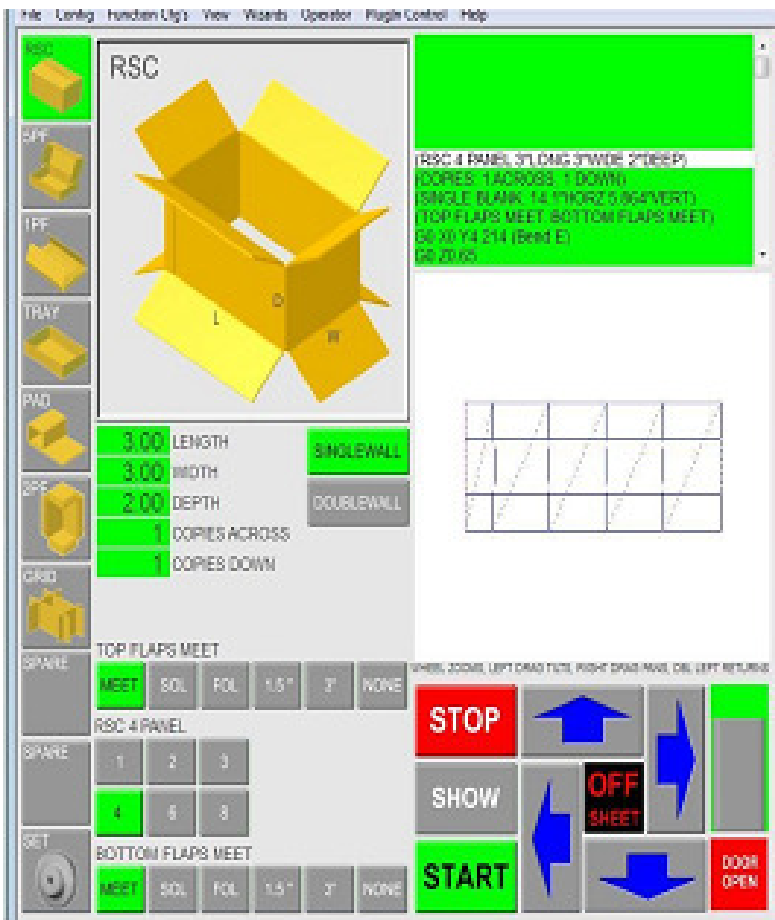
Summary: The BoxCenter is the lowest cost box maker, but also the most versatile. It designs and makes almost 500 box variations. Its compact, light weight and easy to ship. It takes little space, uses little power, does not need special wiring, air compressor or a slitting machine to work. It is quiet and generally well behaved enough for even an office environment. It makes ordinary boxes over a huge range of sizes and special boxes with a few extra clicks. Service and support is provided over the Web.

Warranty: 90 days from shipping date against defects in materials or workmanship. Preferred service and support is provide by video call (free via Skype) so customer is strongly urged to connect the Box-Center computer to the web via the built-in WiFi or Ethernet.

Terms of sale: \$15,000 in U.S. funds, FOB Detroit, Michigan. Shipping costs, Customs fees, taxes or any other charges are the responsibility of buyer.

Offered by: AirCastle Enterprises
15941 Goldwin Place
Southfield, MI 48075-2002

john@aircastle.biz
(586) 482-1578
aircastleskype



The user interface is simple, yet extremely powerful. The screens are all on one level so you get to any box style with one click—you can't get lost. The options are organized into sections that you deal with one at a time. You are presented with only